

Uncommon Chord Candidate Prospectus

IMPORTANT
Please bring this to audition with you

Name:

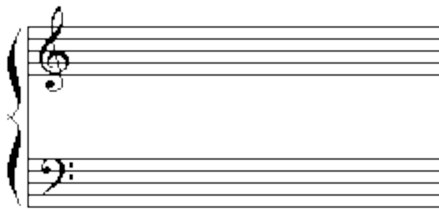
E-mail:

Telephone

Home:
Work:
Cell:

Home Address:

Please indicate your estimate of your voice range on the staff:



OTHER VOCAL GROUP EXPERIENCE (IF ANY):

Group	Size of group; women – men – both?	Where, when?	Usual music style of group	Did you solo with group?

Please describe any other music experience
(e.g. instrument; directing; training; composing/arranging)

Favorite styles of music to sing?

1.
2.
3.

Uncommon Chord is an accomplished group of 10 SSATB recreational singers in New York City who sing contemporary music for the love of it. Our preference is for unique harmony and music with swing, counterpoint and a jazz or pop feel. The repertoire includes music from performers such as the Beach Boys, Mamas and Papas to John Denver, the Temptations, through to Manhattan Transfer, Shai and the Real Group; from composers such as Rodgers, Kern, Gershwin, Berlin and Alan Jay Lerner and from composer/performers such as Duke Ellington, the Beatles, Billy Joel and Queen. Members of the group come from all walks of life and age ranges. We rehearse once weekly in Manhattan's upper west side and aim for two or more arranged concerts per year.

Our history:

In 1994 (we think) a group of singers in the New York Choral Society also wanted to sing music from a more modern idiom and started this group. Over the years, Uncommon Chord has worked hard and sung many performances in public venues as well as private or semi-private settings such as weddings, museum openings and other ceremonies. We have a few members who have been with the group for more than 7 years and others who have joined in the last few months. Members have a wide variety of singing experience; some also sing in other groups; some have had formal training, most have not.

Recently...

...our holiday "sing" was at 333 Riverside Drive; the former residence of Duke Ellington. Our next performance is tentatively scheduled for June

Past repertoire includes:

All The Things You Are; Allegro - Eine Klein Nachtmusik; And So It Goes; Black Coffee in Bed; Blue Moon; Downtown; 80s Medley; Emily; Everybody Got Their Something; For All We Know; Geographical Fugue; God Only Knows; Here, There and Everywhere; How Deep Is The Ocean; I Got Rhythm; I'll Be Seeing You; I'll Follow The Sun; I'm Beginning To See The Light; If I Ever Fall; In My Life; It Don't Mean a Thing; It's De-Lovely; Java Jive; Kalamazoo; Killer Queen; Killing Me Softly; Leaving on a Jet Plane; Love Is Here To Stay; Misty; Mood Indigo; Moon River; Monday, Monday; My Heart Stood Still; Night And Day; Nightingale Sang in Berkeley Square; On The Street Where You Live; Over The Rainbow; Psychedelic Shack; River, Stay 'Way From My Door; Satin Doll; Sentimental Journey; Smoke Gets In Your Eyes; Spiderman; Stray Cat Strut; Take You Back; Tea For Two; 10 Minutes 'Til The Savages Come; The Mighty Mouse Theme; The Way You Look Tonight; They Can't Take That Away From Me; Try To Remember, "All My Lovin, Dream, Emily, Route 66.

Who we are today:

Musical Director: Gary Haberman

Sopranos: Carolyn Ritter, Claire Slemmer, Eva Flaugh

Altos: Ellen Capon

Tenors: Norm Schwab, Peter Zinman

Basses: Dan Stoddard, Henry Hsia

Non-musical stuff:

We are a self-funded group and each member contributes a small weekly amount to pay our Director. We rehearse at the apartment of soprano Bonny Hart on the upper west side of Manhattan. Rehearsals are Monday evenings from 7:30PM until 9:30PM.